

# Chapter 4: Source Menu



© 2005 National Resource for Imaging Mass Spectrometry

## A. Main Source Menu

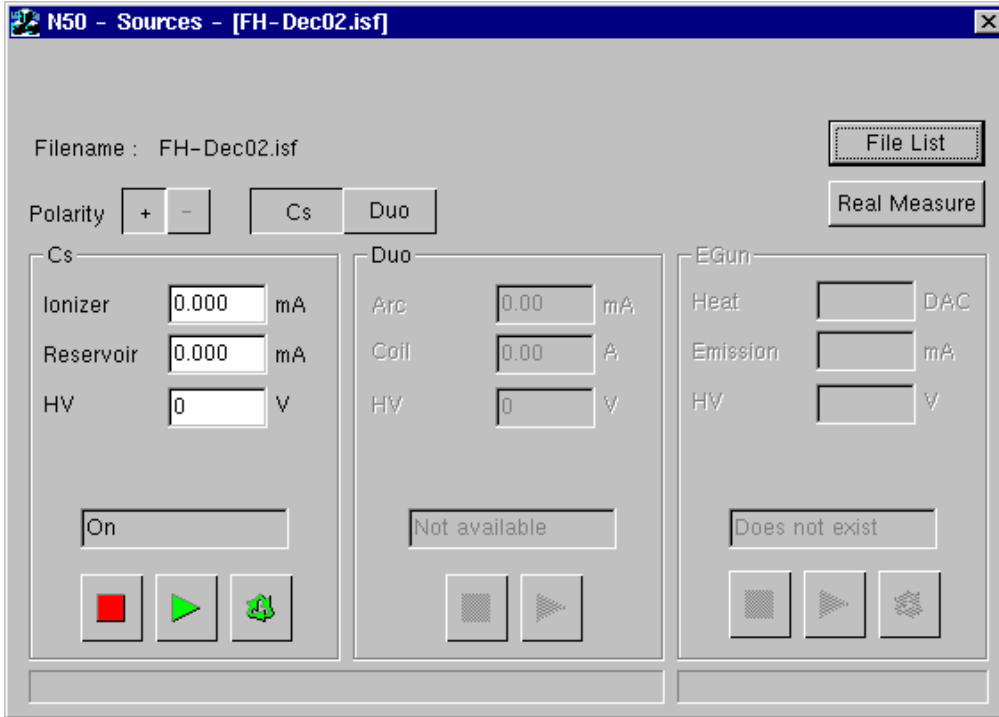


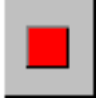






Figure: 4-1:View of Source Menu. This is an example of a window that requires that the top bar be blue before you can type in it.

<b>Menu Details: Main Source Menu</b>	
	<b>Filename.</b> Parameter file for a given source.
	<b>Cs/Duo.</b> Toggles between the Cesium carbonate source and the oxygen duoplasmatron as the source for primary ions.
	<b>Polarity.</b> Set for the charge of the primary ion - positive for cesium cations, negative for oxygen anions.
	<b>Ionizer.</b> Ionizer current. Be sure to hit enter after typing this value.
	<b>Reservoir.</b> Reservoir current. Be sure to hit enter after typing this value.

	<p><b>HV.</b> High voltage potential of the primary column. Be sure to hit enter after typing this value.</p>
	<p><b>State.</b> State of the selected primary ion source.</p>
	<p><b>Stop.</b> Shuts down primary source. When you click this you will be prompted to enter a delay. To shut down right away, enter 0. To shut down at a later time, enter the delay in hours and minutes. After this, another window will ask you if you want to restart. If you answer yes to this, you will be prompted to enter another delay in hours and minutes.</p>
	<p><b>Start.</b> Takes selected source through start-up procedure.</p>
	<p><b>Recycling.</b> Regenerates the source if necessary.</p>
	<p><b>File List.</b> Opens the Sources File List with sets of parameter files for the primary ion sources (see Figure 4-2).</p>
	<p><b>Real Measure.</b> ????</p>

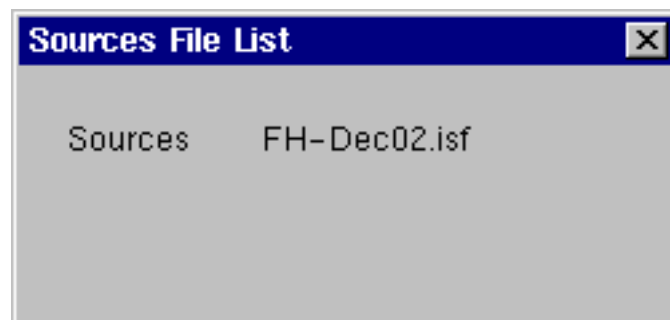


Figure: 4-2: Window that appears after clicking File List .

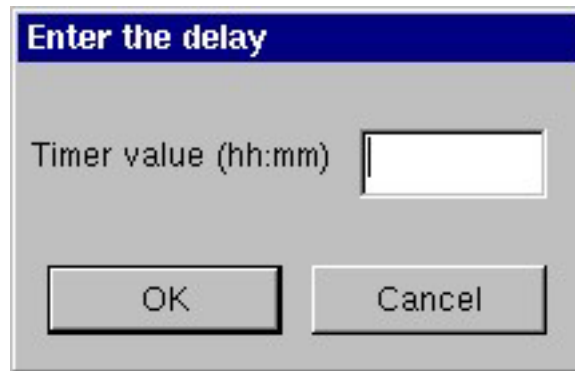


Figure: 4-3: Window that appears when you stop/start machine. Enter the delay time in hours and minutes; if you want to stop/start right away, enter 0.

<b><i>Menu Details: Source File List</i></b>
--

Lists parameter files for the available primary ion sources.
--